



Produzione raccordi, valvole e componenti in ACCIAIO INOX per impianti industriali

RACCORDI GAS-CLAMP



Sanitary Clamp Fittings



Bsp Fittings

LA COMPONENTISTICA COMPLETA DI RACCORDERIE RICAVATE DA MASSELLO ED ACCESSORI SECONDO:

- CLAMP BS4825—DIN32676—ISO —DIN
- GAS UNI 228/1—UNI 7/1—NPT
- DIN 11851

La DAM raccordi s.r.l. si presenta sul mercato con una trentennale esperienza nella lavorazione dell'acciaio inossidabile. L'azienda produce, esclusivamente nel proprio stabilimento in Italia, **RACCORDI VALVOLE E COMPONENTI IN ACCIAIO INOSSIDABILE RICAVATI DA BARRA PER IMPIANTI INDUSTRIALI DEL SETTORE COSMETICO-FARMACEUTICO, ALIMENTARE E CHIMICO**, con l'obiettivo di fornire ai suoi clienti componenti che soddisfino gli stringenti requisiti in termini di elevata qualità costruttiva, garanzia dell'asetticità dei flussi sugli impianti farmaceutici e resistenza alla corrosione da parte di sostanze aggressive.



DAM RACCORDI S.R.L. PURE FLOW EQUIPMENT

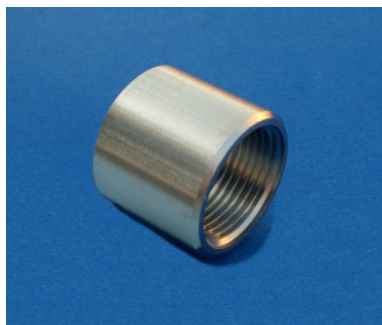
DAM raccordi s.r.l.
Via Melozzo da Forlì, 27/A
20060 Mombretto di Mediglia (MI)
ITALY

Tel. 02 8965 0921
Fax 02 8965 0920
mobile +39 335 58 65 642
damraccordi@alice.it—info@damraccordi.it



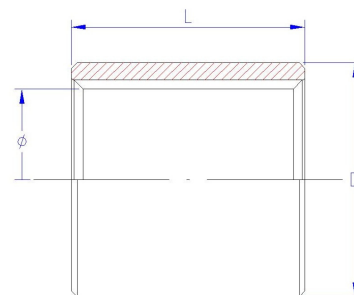
Produzione raccordi, valvole e componenti in ACCIAIO INOX per impianti industriali

Cod. 1—MANICOTTO STANDARD



| Ø | D |
|--------|------|
| 1/8" | 13,5 |
| 1/4" | 20 |
| 3/8" | 22 |
| 1/2" | 27 |
| 3/4" | 34 |
| 1" | 39 |
| 1 1/4" | 49 |
| 1 1/2" | 56 |

SOCKET FEMALE THREADED

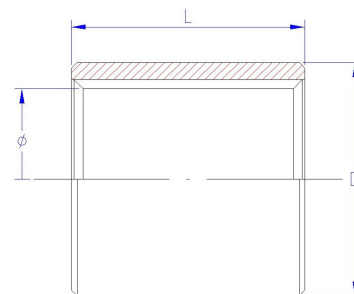


Cod. 2—MANICOTTO CORTO



| Ø | L |
|--------|----|
| 1/8" | 15 |
| 1/4" | 18 |
| 3/8" | 20 |
| 1/2" | 25 |
| 3/4" | 30 |
| 1" | 35 |
| 1 1/4" | 40 |

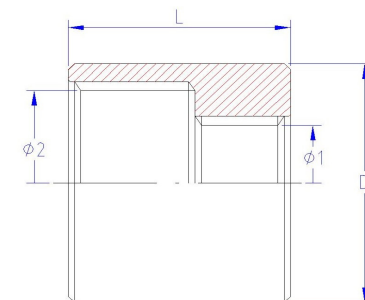
SHORT SOCKET FEMALE THREADED



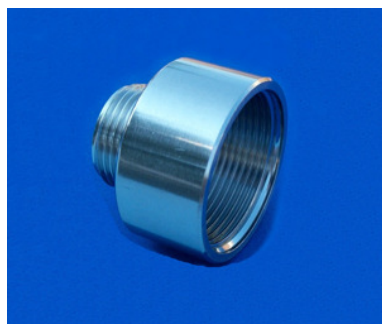
Cod. 3—MANICOTTO RIDOTTO FEMMINA/FEMMINA STEP-DOWN SOCKET FEMALE/FEMALE THREADED



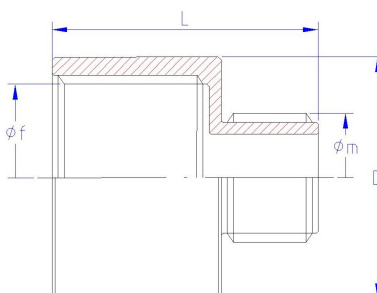
| Ø ₁ | Ø ₂ |
|----------------|----------------|
| 1/8" | 1/4" |
| 1/4" | 3/8" |
| 3/8" | 1/2" |
| 1/2" | 3/4" |
| 3/4" | 1" |
| 1" | 1 1/4" |
| 1 1/4" | 1 1/2" |
| 1 1/2" | 2" |



Cod. 4—MANICOTTO RIDOTTO FEMMINA-MASCHIO STEP-DOWN SOCKET FEMALE/MALE THREADED



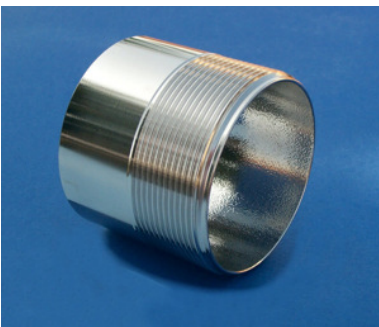
| Ø _M | Ø _F |
|----------------|----------------|
| 1/8" | 1/4" |
| 1/4" | 3/8" |
| 3/8" | 1/2" |
| 1/2" | 3/4" |
| 3/4" | 1" |
| 1" | 1 1/4" |
| 1 1/4" | 1 1/2" |
| 1 1/2" | 2" |
| 2" | 2 1/2" |





Produzione raccordi, valvole e componenti in ACCIAIO INOX per impianti industriali

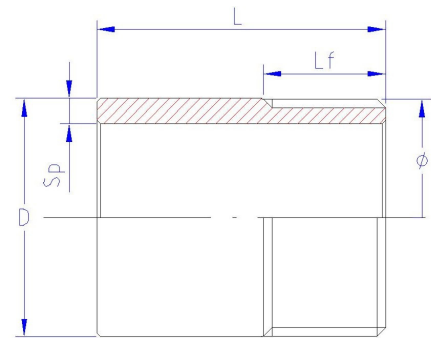
Cod. 5 - TRONCHETTO STANDARD RICAIVATO DA TUBO SENZA SALDATURA



| Ø ₁ | Ø ₂ | L | L _f | SP. |
|----------------|----------------|----|----------------|------|
| 1/8" | 10 | 20 | 10 | 2,4 |
| 1/4" | 13,5 | 25 | 12 | 2,3 |
| 3/8" | 17,2 | 30 | 13 | 2,3 |
| 1/2" | 21,3 | 35 | 17 | 2,77 |
| 3/4" | 26,7 | 40 | 20 | 2,87 |
| 1" | 33,4 | 40 | 20 | 3,38 |
| 1 1/4" | 42,2 | 45 | 20 | 3,56 |
| 1 1/2" | 48,3 | 50 | 22 | 3,68 |
| 2" | 60,3 | 60 | 25 | 3,91 |
| 2 1/2" | 76,1 | 65 | 30 | 3,61 |
| 3" | 88,9 | 70 | 32 | 5,49 |

RICAIVATI DA TUBO S.S. SCHEDULA 40
 MADE FROM S.S. SCHEDULA 40 TUBE

THREADED MALE THREADED - SEAMLESS TUBE



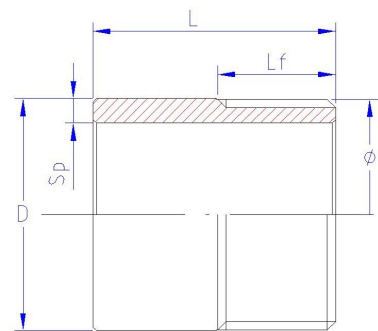
Cod. 6—TRONCHETTO CORTO - TUBO SENZA SALDATURA



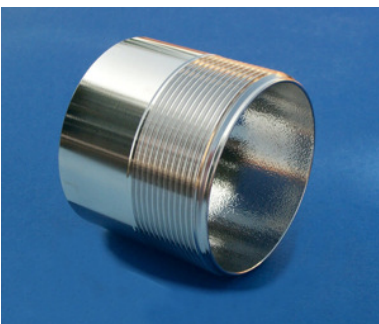
| Ø | L | L _f | SP. |
|--------|----|----------------|------|
| 1/8" | | 10 | 2,4 |
| 1/4" | 18 | 12 | 2,3 |
| 3/8" | 20 | 13 | 2,3 |
| 1/2" | 25 | 17 | 2,77 |
| 3/4" | 30 | 20 | 2,87 |
| 1" | 35 | 20 | 3,38 |
| 1 1/4" | 40 | 20 | 3,56 |
| 1 1/2" | 40 | 22 | 3,68 |
| 2" | 45 | 25 | 3,91 |

RICAIVATI DA TUBO SCHEDULA 40
 MADE FROM SCHEDULA 40 TUBE

SHORT THREADED MALE THREADED SEAMLESS TUBE



Cod. 7—TRONCHETTO LUNGO - TUBO ELETTRONITO

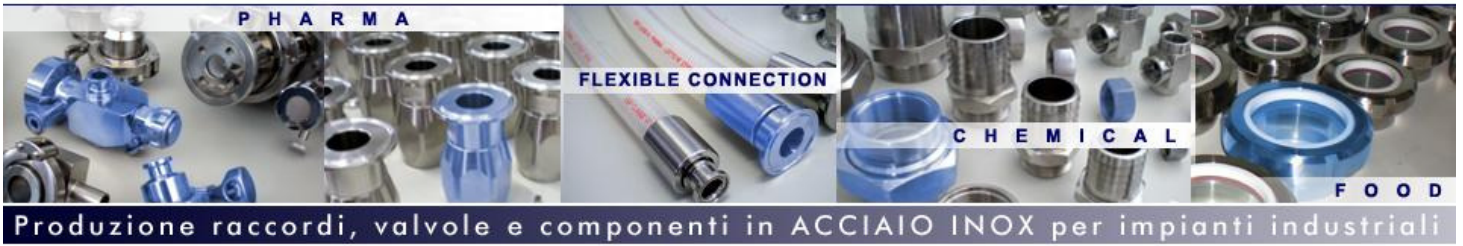


| Ø | L | L _f | SP. |
|--------|-----|----------------|-----|
| 1/8" | 100 | 10 | 1,5 |
| 1/4" | 100 | 12 | 1,5 |
| 3/8" | 100 | 13 | 2 |
| 1/2" | 100 | 17 | 2 |
| 3/4" | 100 | 20 | 2,5 |
| 1" | 100 | 20 | 3 |
| 1 1/4" | 100 | 20 | 3 |
| 1 1/2" | 100 | 22 | 3,5 |
| 2" | 100 | 25 | 3,5 |

RICAIVATI DA TUBO SCHEDULA 40
 MADE FROM SCHEDULA 40 TUBE

LONG THREADED MALE THREADED / WELDED

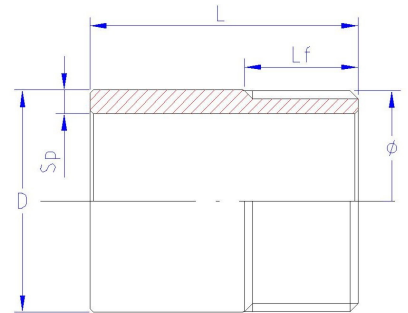



**Cod. 8 - TRONCHETTO STANDARD
 DA TUBO ELETTROUNITO**

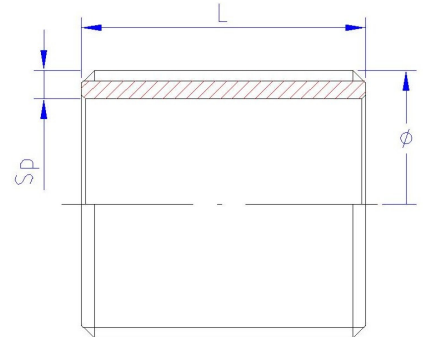
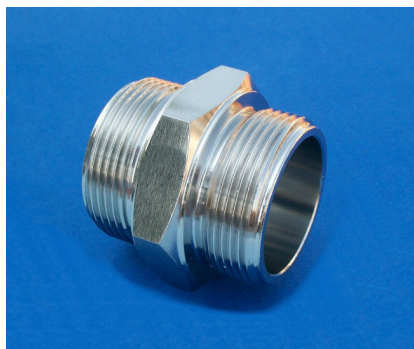

| Ø | L | L _f | SP. |
|--------|----|----------------|------|
| 1/8" | 20 | 10 | 2,4 |
| 1/4" | 25 | 12 | 2,3 |
| 3/8" | 30 | 13 | 2,3 |
| 1/2" | 35 | 17 | 2,77 |
| 3/4" | 40 | 20 | 2,87 |
| 1" | 40 | 20 | 3,38 |
| 1 1/4" | 45 | 20 | 3,56 |
| 1 1/2" | 50 | 22 | 3,68 |
| 2" | 60 | 25 | 3,91 |
| 2 1/2" | 65 | 30 | 3,61 |
| 3" | 70 | 32 | 5,49 |

RICAVATI DA TUBO SCHEDULA 40
 MADE FROM SCHEDULA 40 TUBE

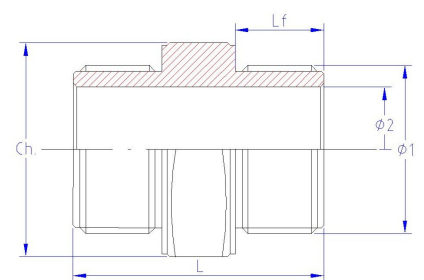
SPESSORE E LUNGHEZZA DEFINIBILI SU RICHIESTA
 CUSTOM-MADE THICKNESS AND LENGTH

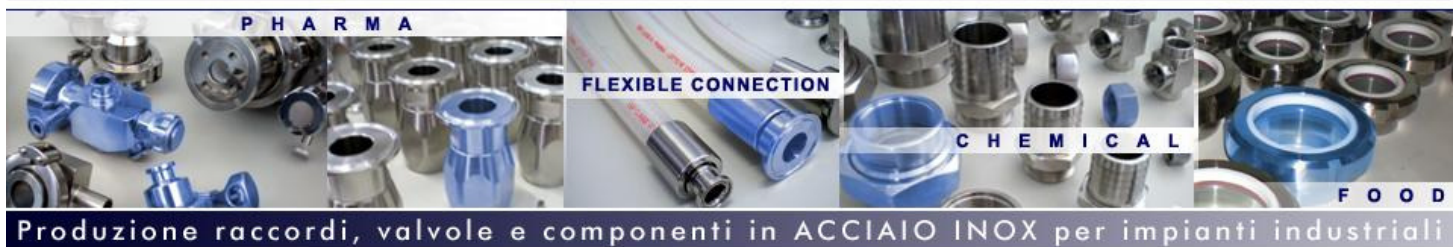
**THREADED MALE THREADED -
 WELDED TUBE**

Cod. 9—BARILOTTO - TUBO SENZA SALDATURA


| Ø | L | SP. |
|--------|----|------|
| 1/8" | 16 | 1,73 |
| 1/4" | 18 | 2,24 |
| 3/8" | 20 | 2,31 |
| 1/2" | 25 | 2,77 |
| 3/4" | 30 | 2,87 |
| 1" | 35 | 3,38 |
| 1 1/4" | 40 | 3,56 |
| 1 1/2" | 40 | 3,68 |
| 2" | 45 | 3,91 |

**THREADED ALL MALE THREADED
 - SEAMLESS TUBE**

Cod. 10— NIPPLO STANDARD


| Ø | L | L _f | CH. |
|--------|----|----------------|-----|
| 1/8" | 26 | 9 | 14 |
| 1/4" | 31 | 10,5 | 19 |
| 3/8" | 34 | 11,5 | 22 |
| 1/2" | 38 | 13 | 27 |
| 3/4" | 42 | 14 | 32 |
| 1" | 46 | 16 | 41 |
| 1 1/4" | 52 | 18 | 50 |
| 1 1/2" | 55 | 19 | 55 |
| 2" | 60 | 21 | 70 |

NIPPLES MALE THREADED


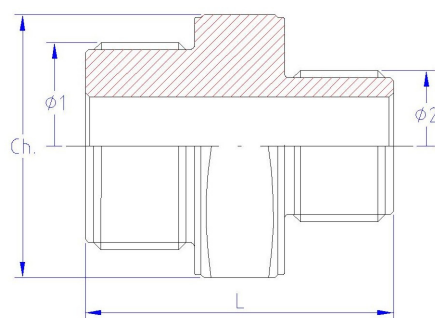


Cod. 11 - NIPLO RIDOTTO

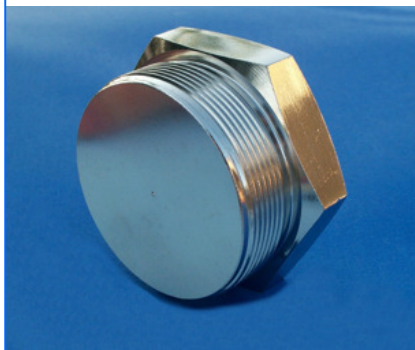


| \varnothing_1 | \varnothing_2 | CH. |
|-----------------|-----------------|-----|
| 1/8" | 1/4" | 19 |
| 1/4" | 3/8" | 22 |
| 3/8" | 1/2" | 27 |
| 1/2" | 3/4" | 32 |
| 3/4" | 1" | 41 |
| 1" | 1 1/4" | 50 |
| 1 1/4" | 1 1/2" | 55 |
| 1 1/2" | 2" | 70 |
| 2" | 2 1/2" | 90 |

STEP-DOWN NIPPLES MALE THREADED

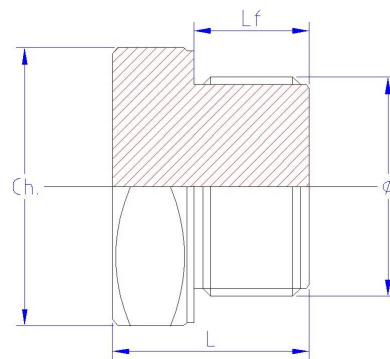


Cod. 12—TAPPO MASCHIO

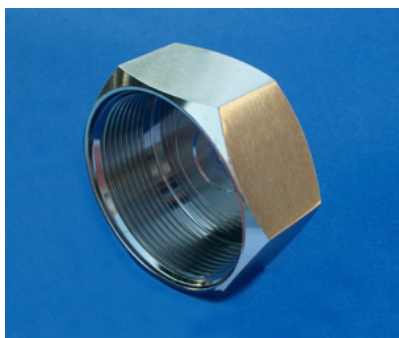


| \varnothing | L | L_f | CH. |
|---------------|----|-------|-----|
| 1/8" | 17 | 9 | 14 |
| 1/4" | 19 | 10 | 19 |
| 3/8" | 21 | 11 | 22 |
| 1/2" | 24 | 13 | 27 |
| 3/4" | 27 | 14 | 32 |
| 1" | 29 | 16 | 41 |
| 1 1/4" | 33 | 18 | 50 |
| 1 1/2" | 35 | 19 | 55 |
| 2" | 38 | 21 | 70 |

MALE PLUG

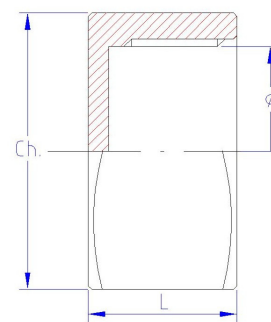


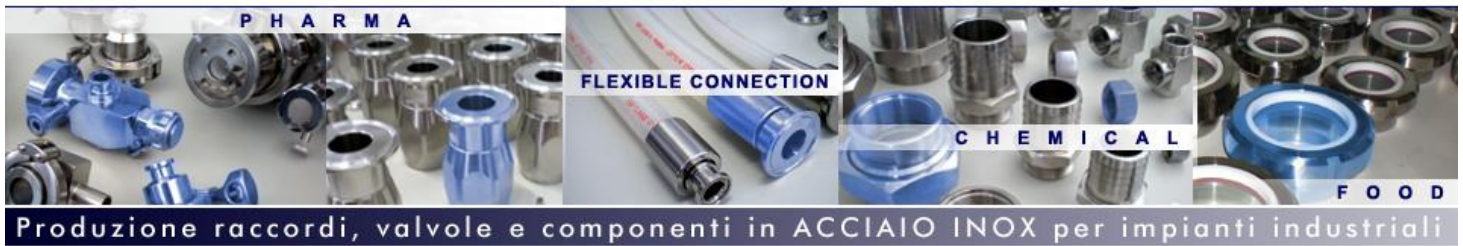
Cod. 13—TAPPO FEMMINA



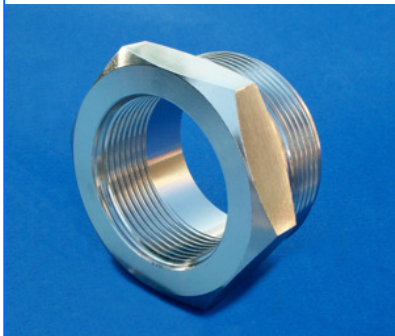
| \varnothing | L |
|---------------|----|
| 1/8" | 14 |
| 1/4" | 14 |
| 3/8" | 16 |
| 1/2" | 17 |
| 3/4" | 20 |
| 1" | 22 |
| 1 1/4" | 24 |
| 1 1/2" | 27 |
| 2" | 30 |

FEMALE PLUG



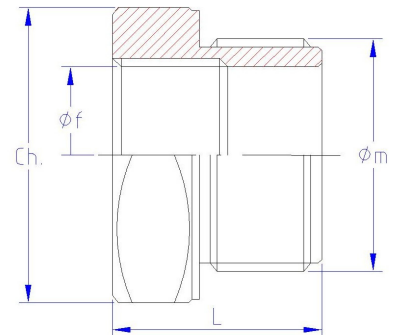


Cod. 14 —RIDUZIONE MASCHIO FEMMINA

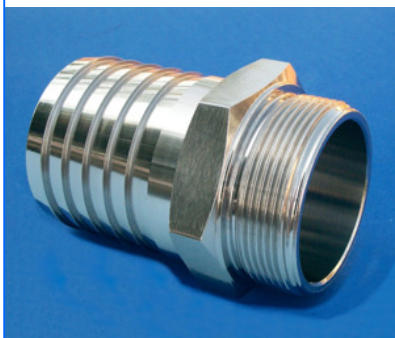


| \varnothing_M | \varnothing_F | L | CH. | L_f |
|-----------------|-----------------|----|-----|-------|
| 1/4" | 1/8" | 19 | 19 | 9 |
| 3/8" | 1/4" | 21 | 22 | 10 |
| 1/2" | 3/8" | 24 | 27 | 11 |
| 3/4" | 1/2" | 27 | 32 | 13 |
| 1" | 3/4" | 29 | 41 | 14 |
| 1 1/4" | 1" | 33 | 50 | 16 |
| 1 1/2" | 1 1/4" | 35 | 55 | 18 |
| 2" | 1 1/2" | 38 | 70 | 19 |

REDUCTION MALE-FEMALE

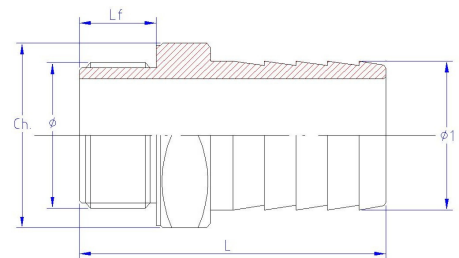


Cod. 15 —PORTAGOMMA FILETTATO MASCHIO

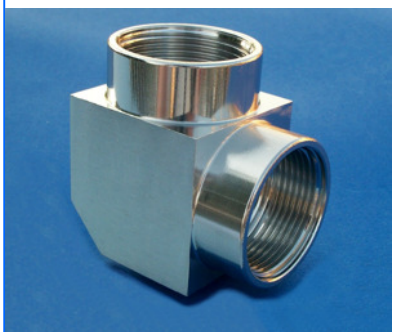


| \varnothing | \varnothing_i | \varnothing_e | L |
|---------------|-----------------|-----------------|-----|
| 1/8" | 6 | 10 | 40 |
| 1/4" | 9 | 13 | 45 |
| 3/8" | 11 | 17 | 51 |
| 1/2" | 15 | 21 | 59 |
| 3/4" | 20 | 27 | 67 |
| 1" | 25 | 33 | 75 |
| 1 1/4" | 32 | 42 | 83 |
| 1 1/2" | 40 | 48 | 90 |
| 2" | 50 | 60 | 103 |

RUBBER HOSE ADAPTOR MALE THREADED

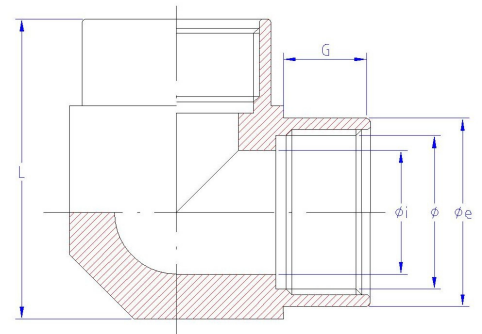


Cod. 16 — GOMITO FILETTATO FEMMINA



| \varnothing | \varnothing_i | \varnothing_e | L |
|---------------|-----------------|-----------------|----|
| 1/8" | 7 | 14 | 25 |
| 1/4" | 9 | 19 | 30 |
| 3/8" | 11 | 23 | 35 |
| 1/2" | 15 | 28 | 40 |
| 3/4" | 20 | 34 | 50 |
| 1" | 25 | 39 | 60 |
| 1 1/4" | 32 | 48 | 70 |
| 1 1/2" | 40 | 58 | 78 |
| 2" | 50 | 68 | 93 |

90° ELBOW FEMALE THREADED

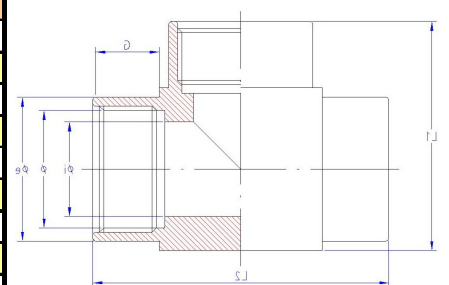


Cod. 17 — TEE FILETTATO FEMMINA



| \varnothing | \varnothing_i | \varnothing_e | L_1 | L_2 | G |
|---------------|-----------------|-----------------|-------|-------|----|
| 1/8" | 7 | 14 | 25 | 35 | 10 |
| 1/4" | 9 | 19 | 30 | 40 | 11 |
| 3/8" | 11 | 23 | 35 | 47 | 12 |
| 1/2" | 15 | 28 | 40 | 52 | 13 |
| 3/4" | 20 | 34 | 50 | 64 | 15 |
| 1" | 25 | 39 | 60 | 76 | 17 |
| 1 1/4" | 32 | 48 | 70 | 88 | 20 |
| 1 1/2" | 40 | 58 | 78 | 98 | 21 |
| 2" | 50 | 68 | 93 | 114 | 23 |

TEE FEMALE THREADED



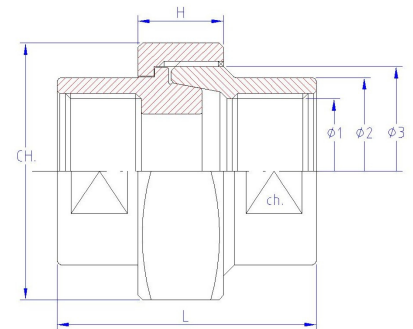


Cod. 18 — RACCORDO COMPLETO FIL. FEM. SEDE CONICA

UNION FEMALE THREADED—CONICAL SEAT



| Ø ₁ | Ø ₂ | Ø ₃ | L | H | CH. | ch. |
|----------------|----------------|----------------|----|----|-----|-----|
| 1/8" | 15 | 1/2" | 38 | 14 | 27 | 13 |
| 1/4" | 19 | 3/4" | 42 | 15 | 32 | 16 |
| 3/8" | 23 | 7/8" | 45 | 16 | 36 | 20 |
| 1/2" | 28 | 1 1/8" | 48 | 18 | 46 | 25 |
| 3/4" | 34 | 1 1/4" | 52 | 19 | 50 | 30 |
| 1" | 40 | 1 1/2" | 58 | 21 | 55 | 36 |
| 1 1/4" | 50 | 2" | 65 | 24 | 70 | 46 |
| 1 1/2" | 56 | 2 1/4" | 70 | 26 | 75 | 52 |
| 2" | 70 | 2 3/4" | 78 | 29 | 90 | 65 |

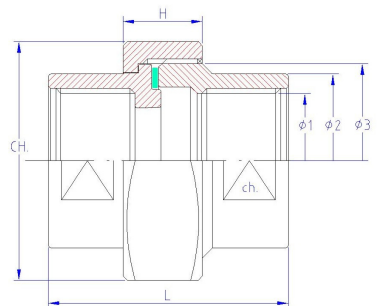


Cod. 19 — RACCORDO COMPLETO FILETTATO FEMMINA CON SEDE PIANA

UNION FEMALE THREADED WITH PLANE SEAT



| Ø ₁ | Ø ₂ | Ø ₃ | L | H | CH. | ch. |
|----------------|----------------|----------------|----|----|-----|-----|
| 1/8" | 15 | 1/2" | 38 | 14 | 27 | 13 |
| 1/4" | 19 | 3/4" | 42 | 15 | 32 | 16 |
| 3/8" | 23 | 7/8" | 45 | 16 | 36 | 20 |
| 1/2" | 28 | 1 1/8" | 48 | 18 | 46 | 25 |
| 3/4" | 34 | 1 1/4" | 52 | 19 | 50 | 30 |
| 1" | 40 | 1 1/2" | 58 | 21 | 55 | 36 |
| 1 1/4" | 50 | 2" | 65 | 24 | 70 | 46 |
| 1 1/2" | 56 | 2 1/4" | 70 | 26 | 75 | 52 |
| 2" | 70 | 2 3/4" | 78 | 29 | 90 | 65 |

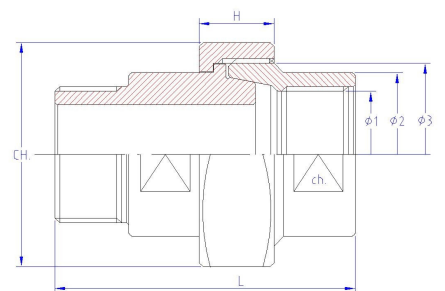


Cod. 20 — RACCORDO COMPLETO FILETTATO MASCHIO/FEMMINA CON SEDE CONICA

UNION MALE/FEMALE THREADED WITH CONICAL SEAT

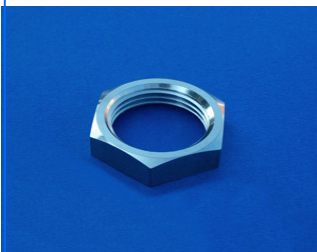


| Ø ₁ | Ø ₂ | Ø ₃ | L | H | CH. | ch. |
|----------------|----------------|----------------|-----|----|-----|-----|
| 1/8" | 15 | 1/2" | 48 | 14 | 27 | 13 |
| 1/4" | 19 | 3/4" | 53 | 15 | 32 | 16 |
| 3/8" | 23 | 7/8" | 57 | 16 | 36 | 20 |
| 1/2" | 28 | 1 1/8" | 63 | 18 | 46 | 25 |
| 3/4" | 34 | 1 1/4" | 70 | 19 | 50 | 30 |
| 1" | 40 | 1 1/2" | 78 | 21 | 55 | 36 |
| 1 1/4" | 50 | 2" | 86 | 24 | 70 | 46 |
| 1 1/2" | 56 | 2 1/4" | 92 | 26 | 75 | 52 |
| 2" | 70 | 2 3/4" | 103 | 29 | 90 | 65 |

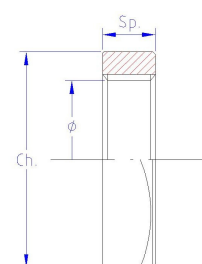


Cod. 21 — CONTRODADO

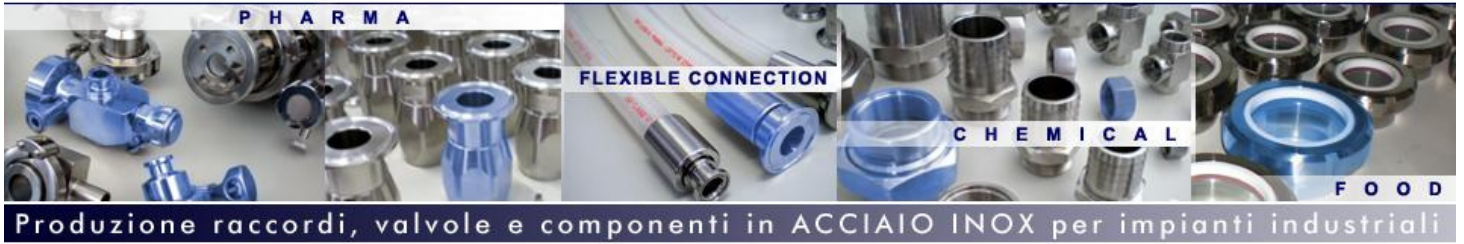
CHECK NUT



| Ø | SP. | CH. |
|--------|-----|-----|
| 1/8" | | |
| 1/4" | | |
| 3/8" | | |
| 1/2" | | |
| 3/4" | | |
| 1" | | |
| 1 1/4" | | |
| 1 1/2" | | |

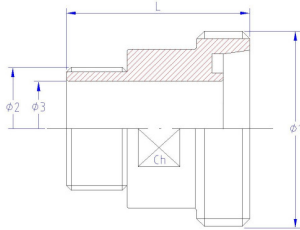


RACCORDI INOX GAS/INOX BSP fittings ISO 228/1



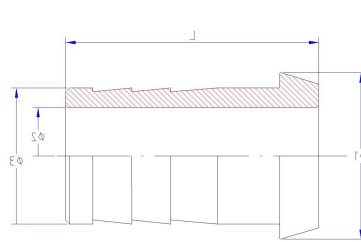
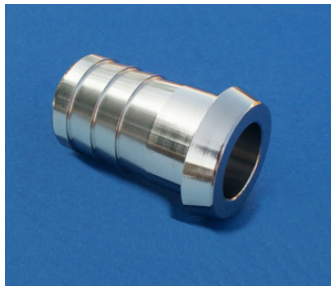
Cod.22 — ADATTATORE DIN 11851 F. - GAS M.
DIN11851 male part—BSP MALE ADAPTER

DIMENSIONI A RICHIESTA
Custom-made dimension



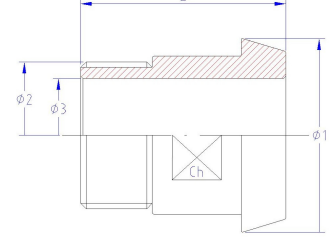
Cod.23 — PORTAGOMMA DIN 11851
DIN 11851 HOSE ADAPTER

DIMENSIONI A RICHIESTA
Custom-made dimension

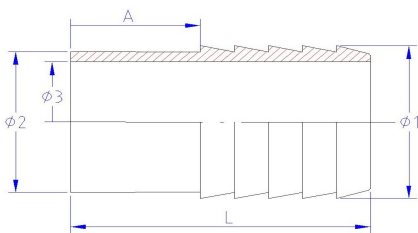


Cod.24 — ADATTATORE DIN 11851 M. - GAS M.
DIN11851 taper part—BSP MALE ADAPTER

DIMENSIONI A RICHIESTA
Custom-made dimension



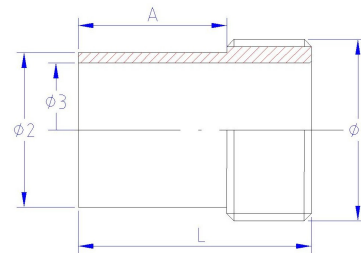
Cod.25 — ATTACCO PORTAGOMMA A SALDARE
WELDED HOSE CONNECTION



| DIN | | | | | |
|-----|----|----------------|----------------|----------------|------|
| dn | L | Ø ₃ | Ø ₂ | Ø ₁ | gr. |
| 28 | 42 | 25 | 28 | 34 | 80 |
| 34 | 45 | 31 | 34 | 40 | 105 |
| 40 | 52 | 37 | 40 | 46 | 145 |
| 52 | 59 | 49 | 52 | 58 | 210 |
| 70 | 72 | 66 | 70 | 76 | 380 |
| 85 | 73 | 81 | 85 | 93 | 570 |
| 101 | 95 | 97,6 | 101,6 | 114 | 1400 |

| SMS | | | | | |
|-----|----|----------------|----------------|----------------|------|
| dn | L | Ø ₃ | Ø ₂ | Ø ₁ | gr. |
| 25 | 49 | 22,4 | 25,4 | 28,6 | 100 |
| 38 | 58 | 35,1 | 38,1 | 41,3 | 200 |
| 51 | 67 | 47,8 | 50,8 | 54 | 290 |
| 63 | 81 | 60,5 | 63,5 | 66,7 | 320 |
| 76 | 81 | 72,9 | 76,2 | 79,4 | 670 |
| 101 | 95 | 97,6 | 101,6 | 109 | 1400 |

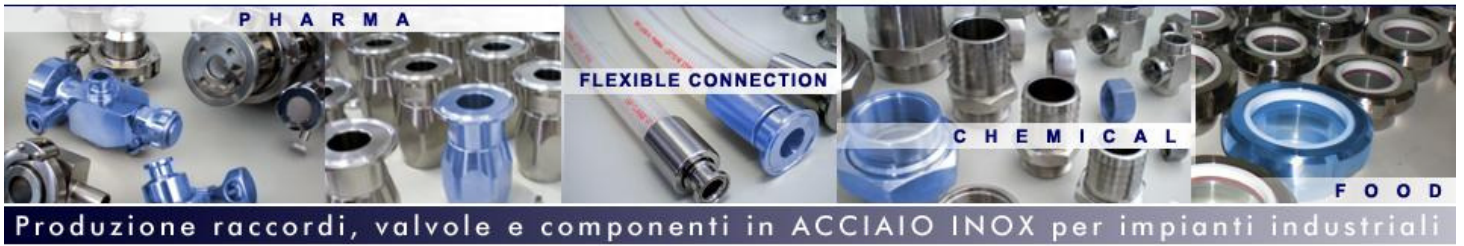
Cod. 26 — ATTACCO FILETTATO A SALDARE
WELDED THREADED CONNECTION



| DIN | | | | | |
|-----|----|----------------|----------------|----------------|------|
| dn | L | Ø ₃ | Ø ₂ | Ø ₁ | gr. |
| 28 | 42 | 25 | 28 | 34 | 80 |
| 34 | 45 | 31 | 34 | 40 | 105 |
| 40 | 52 | 37 | 40 | 46 | 145 |
| 52 | 59 | 49 | 52 | 58 | 210 |
| 70 | 72 | 66 | 70 | 76 | 380 |
| 85 | 73 | 81 | 85 | 93 | 570 |
| 101 | 95 | 97,6 | 101,6 | 114 | 1400 |

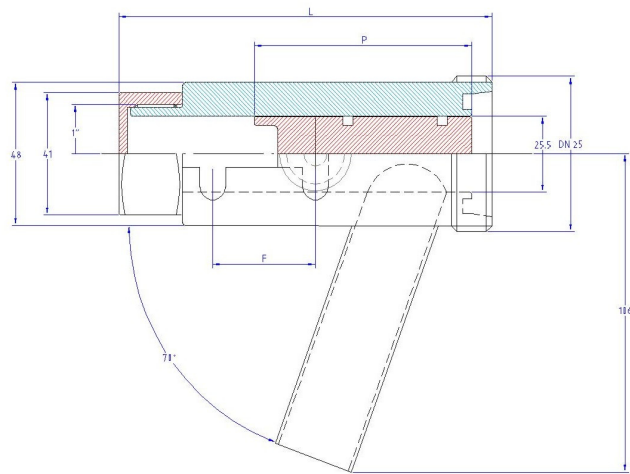
| SMS | | | | | |
|-----|----|----------------|----------------|----------------|------|
| dn | L | Ø ₃ | Ø ₂ | Ø ₁ | gr. |
| 25 | 49 | 22,4 | 25,4 | 28,6 | 100 |
| 38 | 58 | 35,1 | 38,1 | 41,3 | 200 |
| 51 | 67 | 47,8 | 50,8 | 54 | 290 |
| 63 | 81 | 60,5 | 63,5 | 66,7 | 320 |
| 76 | 81 | 72,9 | 76,2 | 79,4 | 670 |
| 101 | 95 | 97,6 | 101,6 | 109 | 1400 |

RACCORDI INOX DIN 11851-SMS/INOX DIN11851-SMS fittings



Cod. 27 —INTERCETTATORE RAPIDO ALIMENTARE DIN

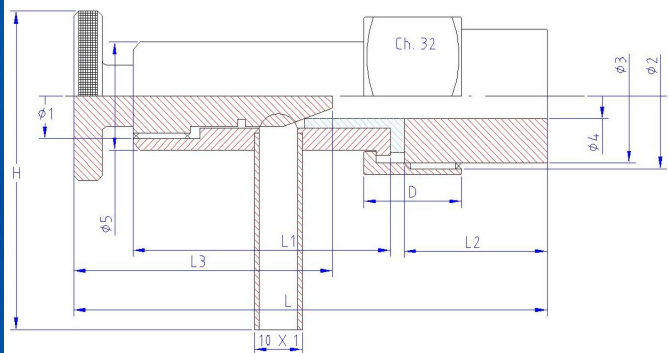
RAPID COCK FOR FOOD PLANTS



| DIN | | | | | |
|-----|----|----|----|----------------|-----|
| dn | L | P | f | Ø ₁ | gr. |
| 25 | 42 | 25 | 28 | 34 | 80 |

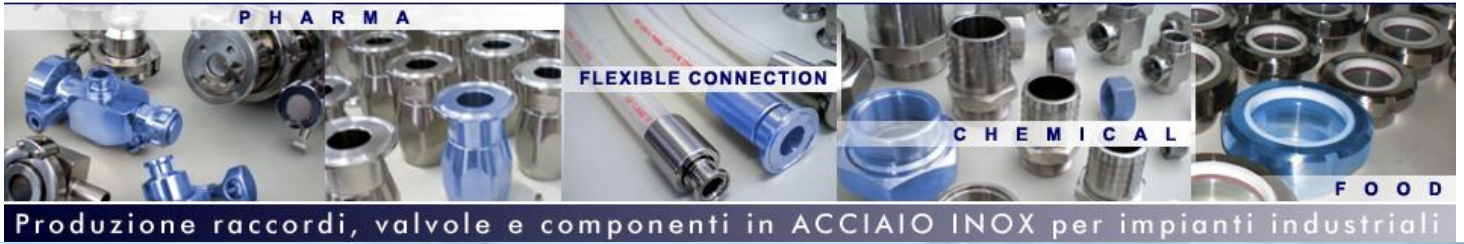
Cod. 28 — RUBINETTO PER PRELIEVO

SAMPLING COCK



| DIN | | | | | |
|-----|----|----|----|----------------|-----|
| dn | L | P | f | Ø ₁ | gr. |
| 25 | 42 | 25 | 28 | 34 | 80 |

Rubinetto AISI 304L PER IMPIANTI ALIMENTARI
AISI 304L Plug Cocks for food plant

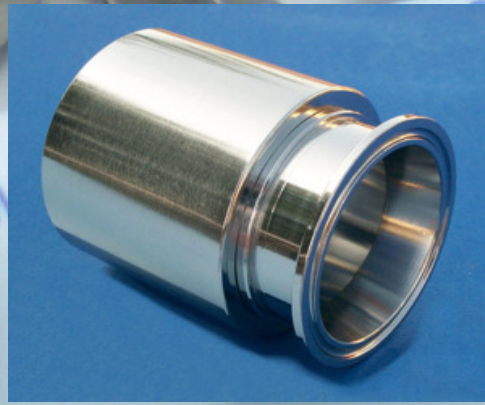
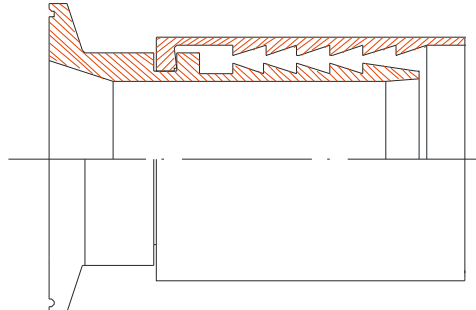
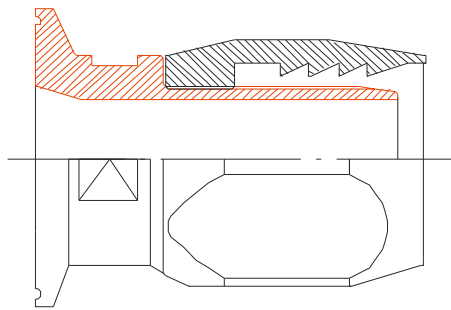


Cod. 29 RACCORDO CLAMP RECUPERABILE
PER TUBI INDUSTRIALI
*RECOVERABLE CLAMP END FITTING
FOR INDUSTRIAL TUBES*

Cod. 30 — RACCORDO CLAMP PRESSABILE
PER TUBI INDUSTRIALI
*PRESED CLAMP END FITTING FOR INDUSTRIAL
TUBES*

Raccordo **RECUPERABILE**

Raccordo **PRESSABILE**



| | |
|--------------|-----------|
| TC BS 4825 | ISO 2852 |
| TC DIN 32676 | DIN 11851 |

**RICHIEDETE LA BROCHURE SPECIFICA
ASK FOR DEDICATED DOCUMENTATION**

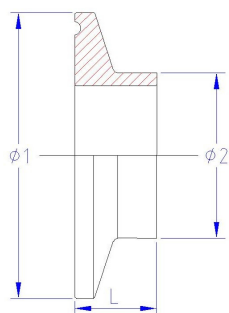
RACCORDI PER TUBI FLESSIBILI - FLEXIBLE HOSE INOX fittings



I raccordi clamp prodotti da Dam raccordi sono realizzati per lavorazione da asportazione di truciolo da BARRA PIENA fino al diametro 2.5" e da barra forata per i diametri successivi, per garantire la massima affidabilità' durante i processi di saldatura in automatico. La TRACCIABILITA' è garantita dalla marcatura per micropunzonatura del n° di colata e di lotto riportati su ogni pezzo e dalla certificazione EN100204 3.1. La rugosità standard è ≤ 0.5 micron Ra. Specifiche finiture sono disponibili su richiesta.

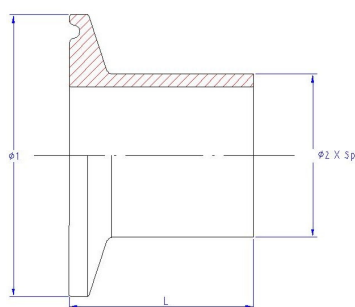
The unions clamp products from Dam raccordi are made for SOLID ROUND BAR machining by chip removal up to diameter 2.5 "and from the perforated bar for subsequent diameters, to ensure maximum reliability 'during ORBITAL welding processes . The traceability 'is ensured by casting nr. and lot nr. marking on each piece and certification EN100204 3.1. The roughness standard is ≤ 0.5 microns Ra. Other finishing grades available on request.

Cod.31 — SEMIRACCORDO CORTO A SALDARE
WELDING SHORT FERRULE



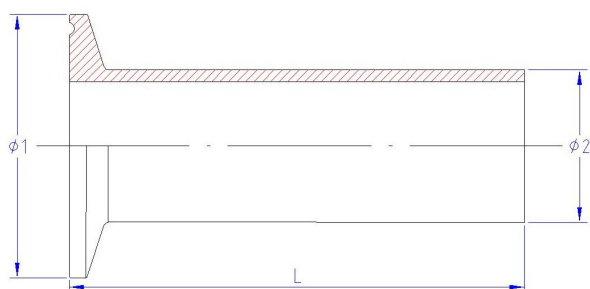
| TRONCHETTO CLAMP CORTO | | | |
|------------------------|----------|----------|------|
| DN | ϕ_1 | ϕ_2 | L |
| 1/2" | 25,4 | 12,7 | 12,7 |
| 3/4" | 25,4 | 19,05 | 12,7 |
| 1" | 50,4 | 25,4 | 12,7 |
| 1,5" | 50,4 | 38,1 | 12,7 |
| 2" | 63,9 | 50,8 | 12,7 |
| 2,5" | 77,4 | 63,5 | 12,7 |
| 3" | 90,9 | 76,2 | 12,7 |
| 4" | 118,9 | 101,6 | 15,8 |

Cod.32 — SEMIRACCORDO A SALDARE
WELDING FERRULE



| TRONCHETTO CLAMP PER ORBITALE | | | |
|-------------------------------|----------|-----------|------|
| DN | ϕ_1 | ϕ_2 | L |
| 1/2" | 25,4 | 12,7 | 28,6 |
| 3/4" | 25,4 | 19,05 | 28,6 |
| 1" | 50,4 | 25,4 | 28,6 |
| 1,5" | 50,4 | 38,1 | 28,6 |
| 2" | 63,9 | 50,8 | 28,6 |
| 2,5" | 77,4 | 63,5 | 28,6 |
| 3" | 90,9 | 76,2 | 28,6 |
| 4" | 118,9 | 101,6 | 28,6 |
| 6" | 167 | 152,4/154 | 28,6 |
| 8" | 217,5 | 203,2 | 28,6 |

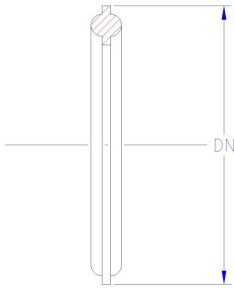
Cod.33 — SEMIRACCORDO LUNGO A SALDARE
WELDING LONG FERRULE



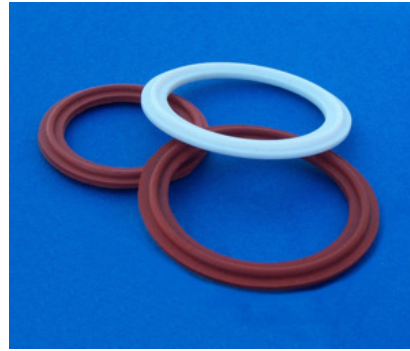
| TRONCHETTO CLAMP LUNGO | | | |
|------------------------|----------|----------|-------|
| DN | ϕ_1 | ϕ_2 | L |
| 1/2" | 25,4 | 12,7 | 60 |
| 3/4" | 25,4 | 19,05 | 60 |
| 1" | 50,4 | 25,4 | 76,2 |
| 1,5" | 50,4 | 38,1 | 76,2 |
| 2" | 63,9 | 50,8 | 76,2 |
| 2,5" | 77,4 | 63,5 | 76,2 |
| 3" | 90,9 | 76,2 | 101,6 |
| 4" | 118,9 | 101,6 | 101,6 |



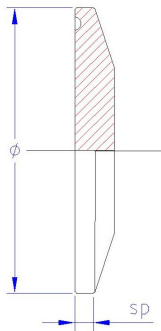
Cod.34
 GUARNIZIONE
 CLAMP
 CLAMP GASKET
 PTFE
 EPDM
 SILICONE
 VITON



| DN | Ø ₁ |
|------|----------------|
| 1/2" | 25,4 |
| 3/4" | 25,4 |
| 1" | 50,4 |
| 1,5" | 50,4 |
| 2" | 63,9 |
| 2,5" | 77,4 |
| 3" | 90,9 |
| 4" | 118,9 |
| 6" | 167 |
| 8" | 217,5 |



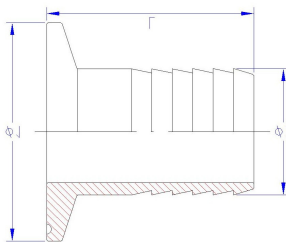
Cod.35
 TAPPO CLAMP
 SOLID BLIND
 CAP



| DN | Ø ₁ |
|------|----------------|
| 1/2" | 25,4 |
| 3/4" | 25,4 |
| 1" | 50,4 |
| 1,5" | 50,4 |
| 2" | 63,9 |
| 2,5" | 77,4 |
| 3" | 90,9 |
| 4" | 118,9 |
| 6" | 167 |
| 8" | 217,5 |



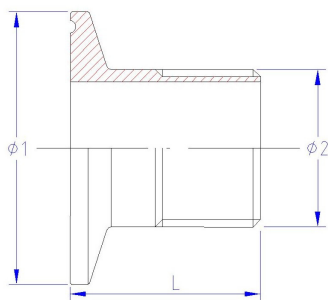
Cod.36
 PORTAGOMMA
 CLAMP
 CLAMP HOSE
 ADAPTER



| DN | Ø ₁ |
|------|----------------|
| 1/2" | 25,4 |
| 3/4" | 25,4 |
| 1" | 50,4 |
| 1,5" | 50,4 |
| 2" | 63,9 |
| 2,5" | 77,4 |
| 3" | 90,9 |
| 4" | 118,9 |
| 6" | 167 |
| 8" | 217,5 |

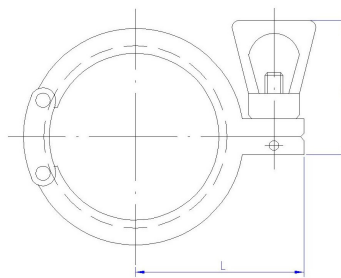


Cod.37 ADATTATORE CLAMP/GAS M/F
 CLAMP THREADED ADAPTER M/F



| DN | Ø ₁ |
|------|----------------|
| 1/2" | 25,4 |
| 3/4" | 25,4 |
| 1" | 50,4 |
| 1,5" | 50,4 |
| 2" | 63,9 |
| 2,5" | 77,4 |
| 3" | 90,9 |
| 4" | 118,9 |
| 6" | 167 |
| 8" | 217,5 |

Cod.38—MORSETTO/ CLAMP



| DN | |
|------|---------------|
| 1/2" | 10" |
| 3/4" | 12" |
| 1" | |
| 1,5" | 2 sectors |
| 2" | 3 sectors |
| 2,5" | High pressure |
| 3" | |
| 4" | |
| 6" | |

AVAILABLE : 90°/45° CLAMP END/WELD ELBOW CLAMP END/WELD END TEE BS4825
 Clamp End mirror polished Ra id = 0.5 // Weld End id Ra = 0.6